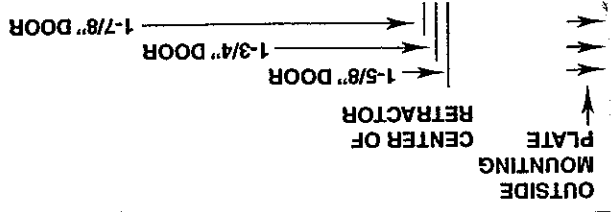
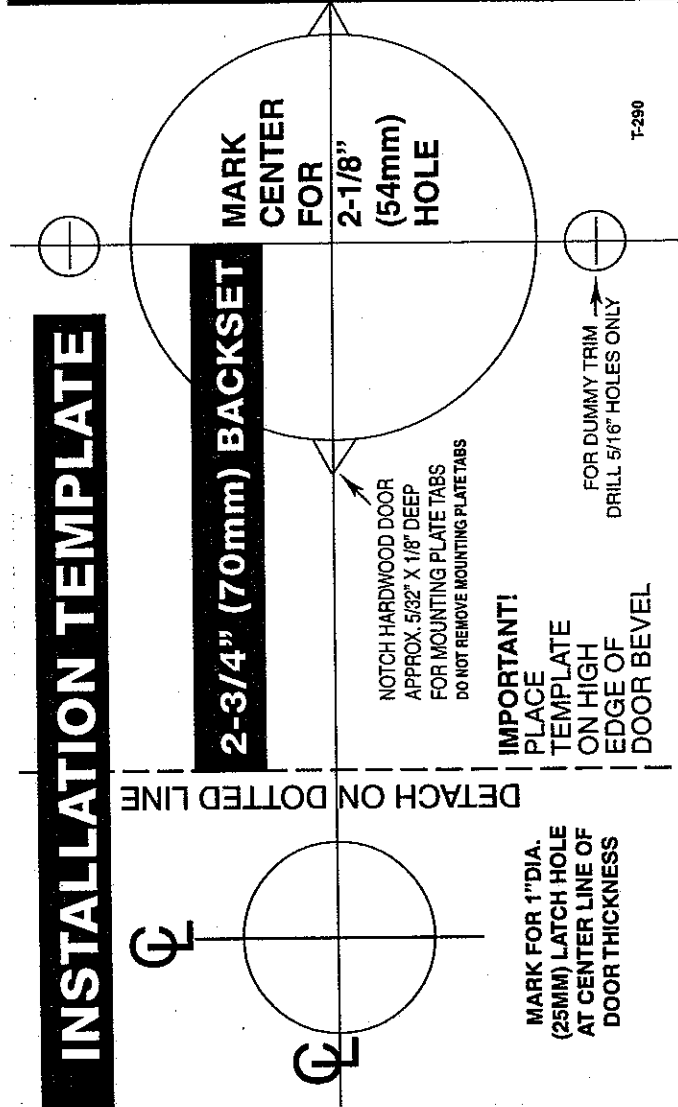


DOOR THICKNESS GAUGE



INSTALLATION TEMPLATE



MARK FOR 1" DIA. (25MM) LATCH HOLE AT CENTER LINE OF DOOR THICKNESS

IMPORTANT!
PLACE TEMPLATE ON HIGH EDGE OF DOOR BEVEL

NOTCH HARDWOOD DOOR APPROX. 5/32" X 1/8" DEEP FOR MOUNTING PLATE TABS DO NOT REMOVE MOUNTING PLATE TABS

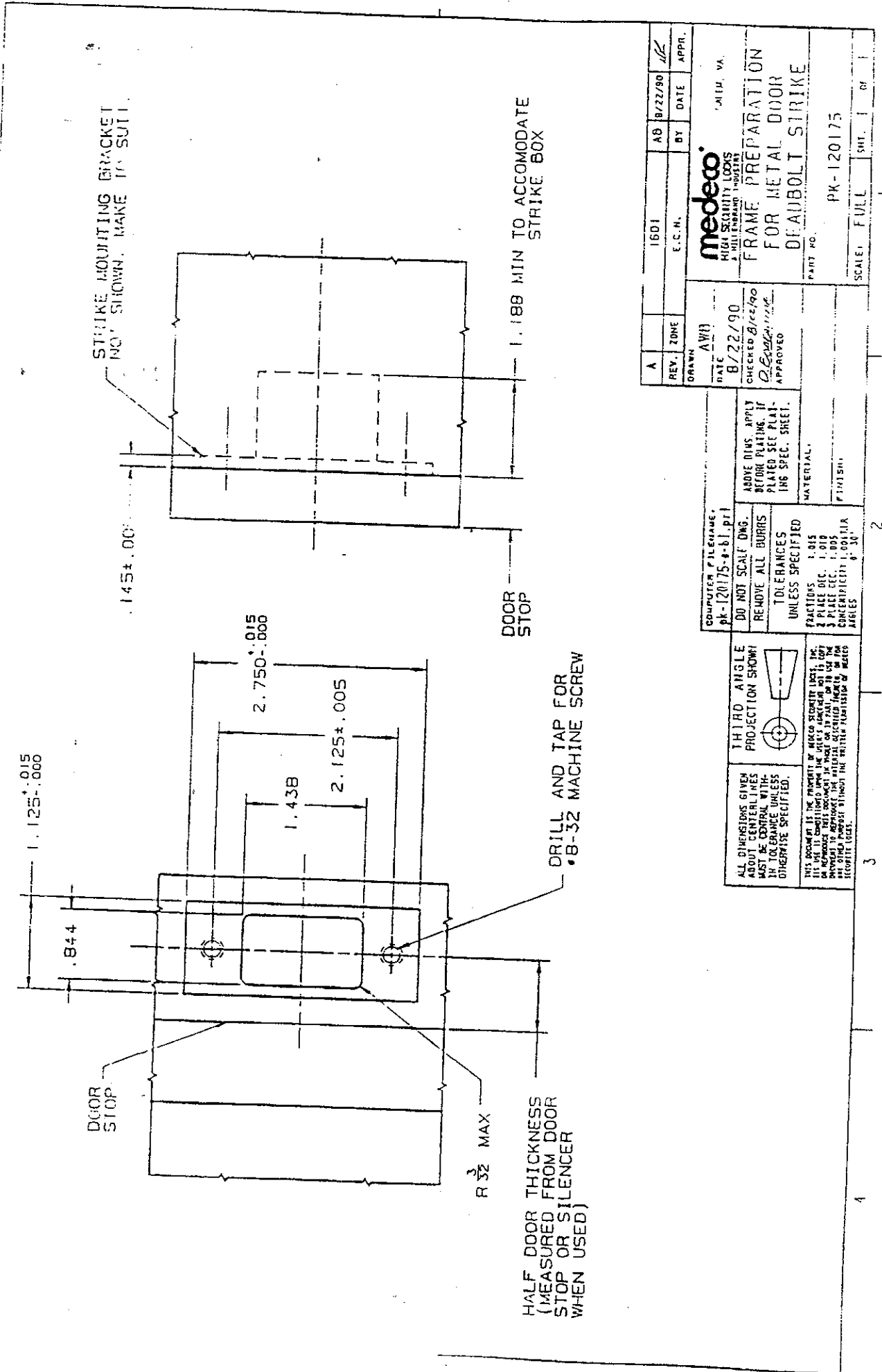
FOR DUMMY TRIM DRILL 5/16" HOLES ONLY

2-3/4" (70mm) BACKSET

MARK CENTER FOR 2-1/8" (54mm) HOLE

DETACH ON DOTTED LINE

T-290



A	REV.	ZONE	DATE	BY	DATE	APPR.
			8/22/90	AB	8/22/90	JK
DRAWN			E.C.N.			
DATE			MILP. VA.			
8/22/90			medeco			
CHECKED			HIGH SECURITY LOCKS			
Bice/90			A HILLBURN INDUSTRIAL			
APPROVED			FRAME PREPARATION			
			FOR METAL DOOR			
			DEAUBOLT STRIKE			
			PART NO.			
			PK-120175			
			SCALE: FULL			
			SHT. 1 OF 1			

COMPUTER FILENAME:
pk-120175-r-b1.pri

DO NOT SCALE DNG.
REMOVE ALL DIMS

ABOVE DIMS APPLY BEFORE PLATING IF PLATED SEE PLATING SPEC. SHEET.

TOLERANCES UNLESS SPECIFIED

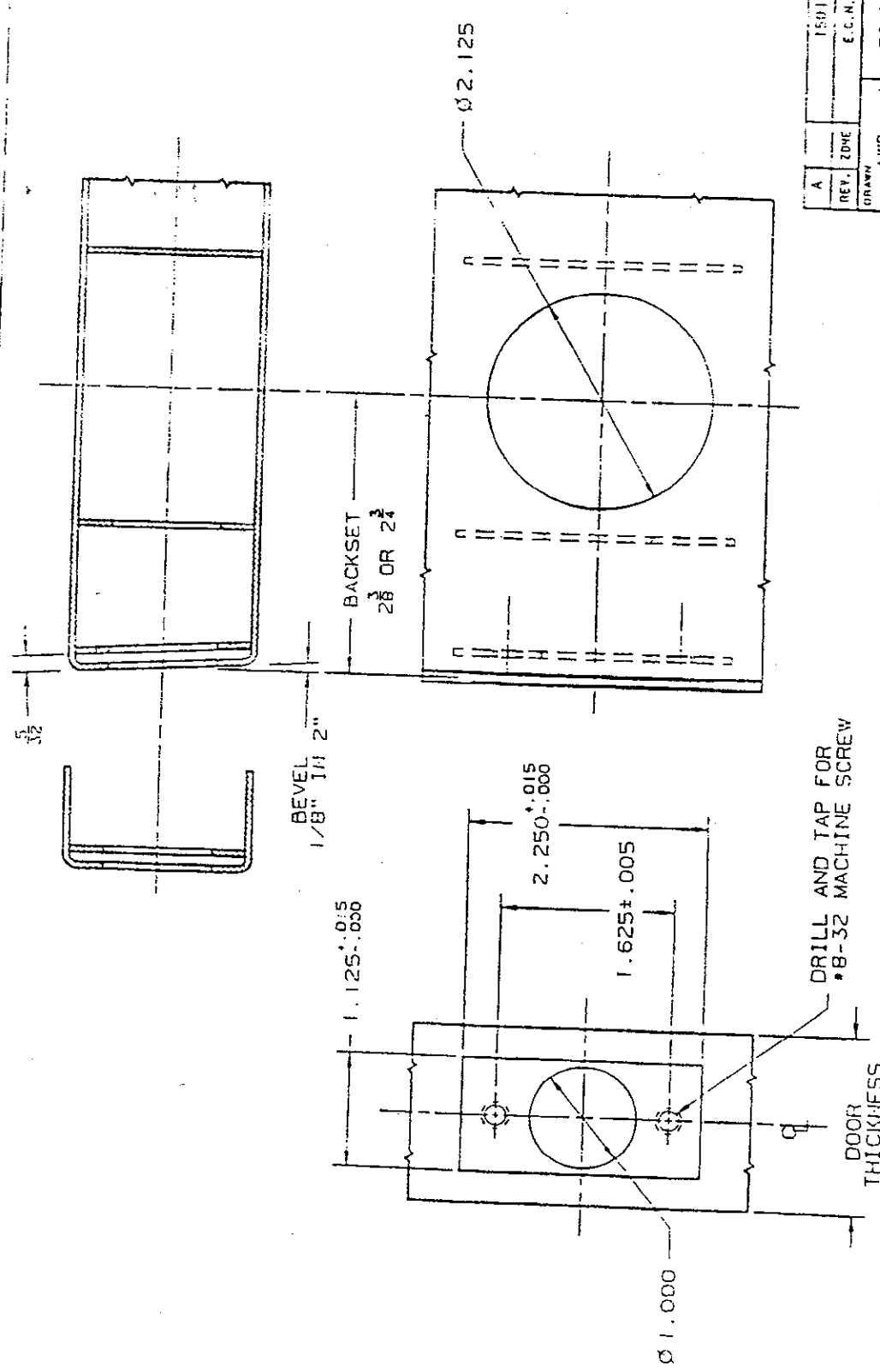
FRACTIONS 1/16
2 PLACE DEC. 1/10
3 PLACE DEC. 1/100
CONCENTRICITY 1/100 DIA
ANGLES 1/30

MATERIAL:
FINISH:

ALL DIMENSIONS GIVEN ABOUT CENTERLINES MUST BE CONTROL WITH 1/16 TOLERANCE UNLESS OTHERWISE SPECIFIED.

THIS DRAWING IS THE PROPERTY OF MEDCO SECURITY LOCKS, INC. IT IS TO BE USED ONLY FOR THE PROJECT AND FOR THE MANUFACTURE OF THE PARTS SPECIFIED HEREIN. IT IS TO BE KEPT IN CONFIDENTIALITY AND NOT TO BE REPRODUCED OR COPIED WITHOUT THE WRITTEN PERMISSION OF MEDCO SECURITY LOCKS.

THIRD ANGLE PROJECTION SHOWN



A	REV. ZONE	TSU1	AD	10/22/90	DATE	127
DRAWN		E.C.N.	BY		APPR.	
DATE		8/22/90		SHEET 1A		
CHECKED		8/22/90		HIGH SECURITY LOCKS		
APPROVED		D.B. O'NEILL		A MILLER COMPANY		
				DOOR & FRAME PREP		
				FOR METAL DOOR		
				STANDARD DEADBOLT		
				PART NO.		
				PK 120174		
				SCALE: 1" = 1"		

COMPUTER FILENAME:
pk-120174-a-b1.prt

DO NOT SCALE DWG.

REMOVE ALL BURRS

TOLERANCES UNLESS SPECIFIED

FRACTIONS 2/15
2 PLACE DEC. 1/10
3 PLACE DEC. 1/100
CONCENTRIC 0.001A
ANGLES 0.30°

ABOVE DIMS. APPLY BEFORE PLATING, IF PLATED SEE PLATING SPEC. SHEET.

MATERIAL:

FINISH:

ALL DIMENSIONS GIVEN ABOUT CENTRAL LINES MUST BE CENTRAL WITHIN TOLERANCE UNLESS OTHERWISE SPECIFIED.

THIRD ANGLE PROJECTION SHOWN

THIS DOCUMENT IS THE PROPERTY OF MEDCO SECURITY LOCKS, INC. IT IS TO BE USED ONLY FOR THE PROJECT AND FOR THE MANUFACTURE OF THE PARTS SPECIFIED THEREIN. IT IS TO BE RETURNED TO MEDCO SECURITY LOCKS, INC. IMMEDIATELY UPON COMPLETION OF THE PROJECT.