

Controlled Access. Audit Capability. Physical Security. System Management.

NEXGEN® Cam Lock

The NEXGEN cam lock is built to the same high security standards as its mechanical counterpart and offers all of the electronic features of the NEXGEN electronic locking system. NEXGEN cam locks are available in lengths of 1 1/8" and 7/8" and use solid steel components to provide superior physical protection.

In addition to the physical protection, the NEXGEN system gives you the ability to program who gets into your locks and when they get in. The system will also track all activity, including unauthorized attempts to open the lock.

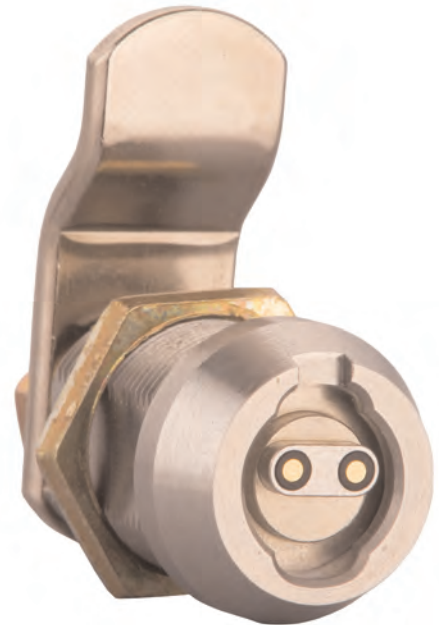
These functions are integrated into the NEXGEN software which provides key management capability that can be customized to meet your specific requirements. The NEXGEN software provides detailed, flexible reports for complete security management.

Benefits:

- ◆ Protect your equipment and revenues by controlling access to your locks
- ◆ Improve collection efficiency by tracking all openings of the lock
- ◆ Strong resistance to physical attack
- ◆ No hardwiring allows for easy installation
- ◆ Provides immediate response to lost or stolen keys
- ◆ Simple installation saves you valuable service time

Applications:

Used when the ability to control and track access is a vital component of your security. Cam lock applications can include computer enclosures, storage cabinets, vending machines, safes, transit equipment, and more.



Ordering Information

EN - 10000X - 2XX

Length

2 = 7/8"
3 = 1 1/8"

Rotation

19 = 90° Clockwise
39 = 90° Counter Clockwise

Technical Information:

- ◆ Break away plug face design prevents over torquing
- ◆ Lock uses stainless steel plug face and shell
- ◆ Hardened steel anti-drill pins in plug face and plug
- ◆ Available in 1 1/8" and 7/8" lengths
- ◆ Rotation can be clockwise or counterclockwise
- ◆ Single key pull

Finishes:

- ◆ 26 Satin Chrome

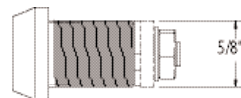
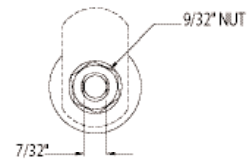
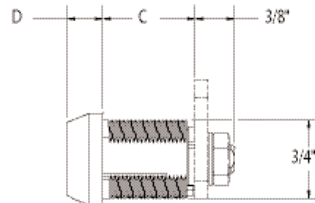
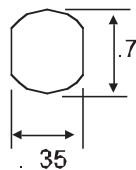
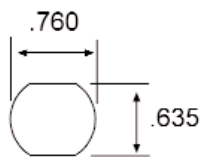
Warranty:

- ◆ 1 year manufacturer's warranty

Technical Drawings

SIZE & MOUNTING DETAIL

Double D Mounting



Size Code	Dimension C (in.)	Dimension D (in.)	Dimension E (in.)
100002	7/8"	11/32"	7/8"
100003	1 1/8"	11/32"	7/18"

medeco[®]
HIGH SECURITY LOCKS
Customer Service: 1-800-633-3261